

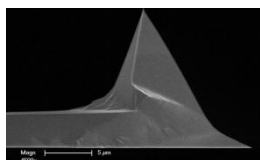
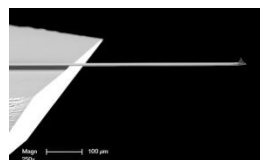
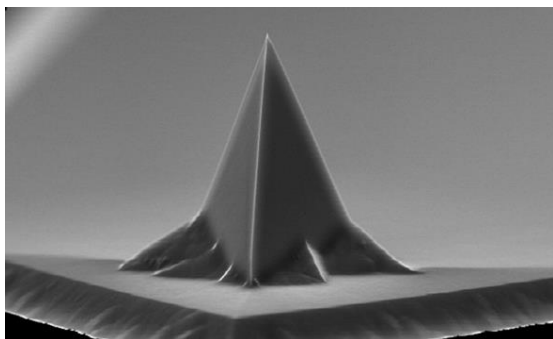


ValueAFMProbes.com
+1.800.715.8440



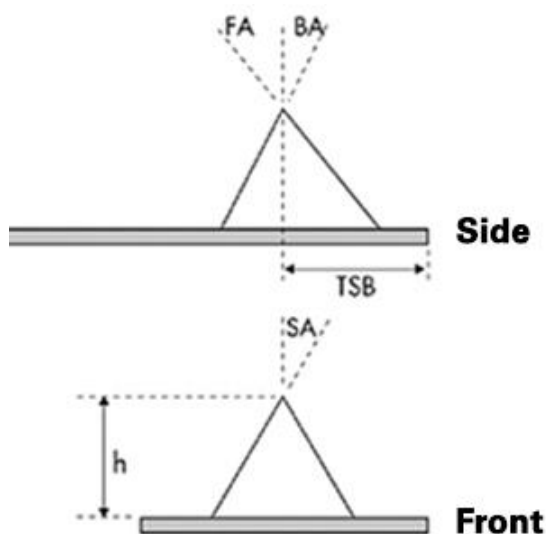
CONTV

General Contact AFM Probes



Models

10-Pack No Reflex Coating	Wafer No Reflex Coating	10-Pack Al Reflex Coating	Wafer Al Reflex Coating
---------------------------------	-------------------------------	---------------------------------	-------------------------------



Product Description

Value Line etched Silicon probes for imaging in contact mode in air.

Specifications: 0.2 N/m, 13 kHz, 10 nm tip radius, no reflex coating.

- 10 probes per pack.
- Compatible with most commercially available AFMs.

Tip Specification

Geometry:	Standard (Steep)
Tip Height (h):	10 - 15 μm
Front Angle (FA):	25 ± 2.5°
Back Angle (BA):	15°
Side Angle (SA):	22.5 ± 2.5°
Tip Radius (Nom):	10 nm
Tip SetBack (TSB)(Nom):	15 μm
Tip Set Back (TSB)(RNG):	5-25 μm

Cantilever Specification

Material:	0.01 - 0.025 Ωcm Antimony (n) doped Si
Geometry:	Rectangular
Cantilevers Number:	1
Cantilever Thickness (Nom):	2 μm
Cantilever Thickness (RNG):	1.5 - 2.5 μm
Back Side Coating:	Reflective Aluminum

For more information email: afmprobeorders@bruker.com or visit:

ValueAFMProbes.com