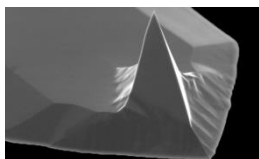
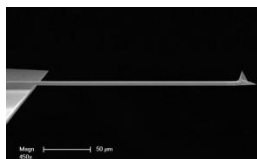
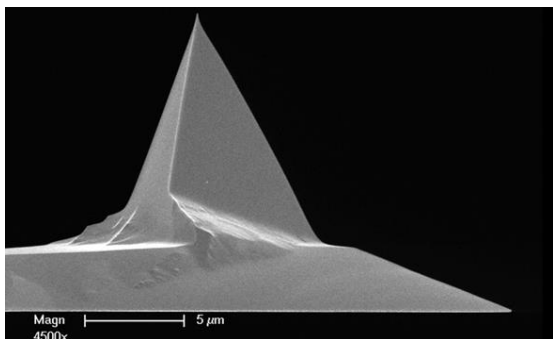




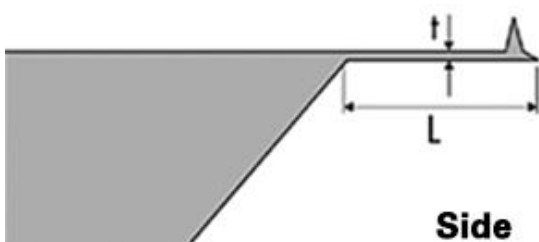
MFMV

Magnetic Coating AFM Probes



Models

10-Pack
Reflex
Coating



For more information email:
afmprobeorders@bruker.com or visit:

ValueAFMProbes.com

Product Description

Value Line etched Silicon probes with magnetic Cobalt-Chromium (CoCr) coating on the tip for magnetic characterization of samples.

Specifications: 2.8 N/m, 75 kHz, 40 nm tip radius, CoCr reflex coating. Magnetic CoCr coated tip that is ideal for Magnetic Force Microscopy applications, as well as other electrical applications requiring a conductive probe.

- Nominal coercivity of 400 Oe (medium), magnetic moment of $1e-13$ EMU (medium)
- Compatible with most commercially available AFMs.

Tip Specification

Geometry:	Standard (Steep)
Tip Height (h):	10 - 15μm
Front Angle (FA):	$25 \pm 2.5^\circ$
Back Angle (BA):	$15 \pm 2.5^\circ$
Side Angle (SA):	$22.5 \pm 2.5^\circ$
Tip Radius (Nom):	40 nm
Tip SetBack (TSB)(Nom):	15 μm
Tip Set Back (TSB)(RNG):	5-25 μm
Tip Coating:	Magnetic CoCr

Cantilever Specification

Material:	0.01 - 0.025 Ωcm Antimony (n) doped Si
Geometry:	Rectangular
Cantilevers Number:	1
Cantilever Thickness (Nom):	2.75 μm
Cantilever Thickness (RNG):	2.0 - 3.5 μm
Front Side Coating:	Magnetic CoCr
Back Side Coating:	Reflective CoCr