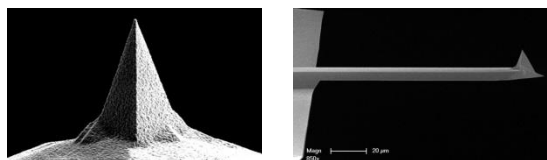
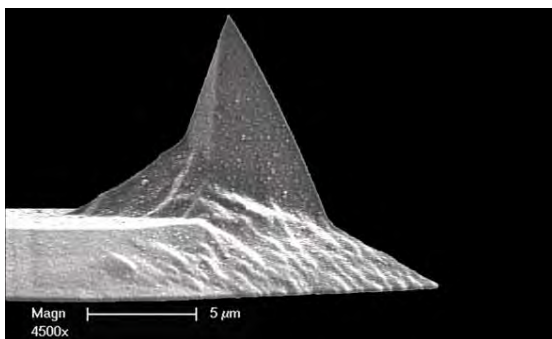


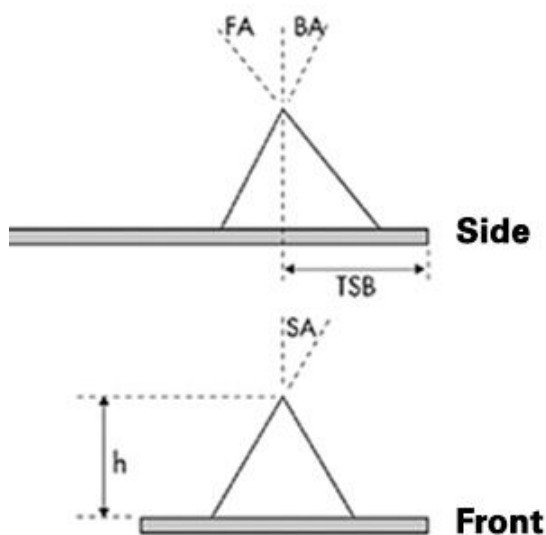
TESPD

Hardened DLC Coating
AFM Probes



Models

10-Pack Al Reflex Coating	Wafer Al Reflex Coating	10-Pack Al Reflex Coating	Wafer Al Reflex Coating
---------------------------------	-------------------------------	---------------------------------	-------------------------------



Product Description

Value Line etched Silicon probes with Diamond-Like Carbon (DLC) coating on tip for increased tip lifetime, for imaging in TappingMode and non-contact mode in air.

Specifications: 40 N/m, 320 kHz, 10 nm tip radius, Al reflex coating.

- 10 probes per pack.
- Compatible with most commercially available AFMs.

Tip Specification

Geometry:	Standard (Steep)
Tip Height (h):	10 – 15 µm
Front Angle (FA):	25 ± 2.5°
Back Angle (BA):	15 ± 2.5°
Side Angle (SA):	22.5 ± 2.5°
Tip Radius (Nom):	15 nm
Tip Set Back (TSB)(Nom):	12.5 µm
Tip Set Back (TSB)(RNG):	9 - 16 µm
Tip Coating:	Hardened DLC

Cantilever Specification

Material:	0.01 - 0.025 Ωcm Antimony (n) doped Si
Geometry:	Rectangular
Cantilevers Number:	1
Cantilever Thickness (Nom):	3.5 µm
Cantilever Thickness (RNG):	2.8 - 4.2 µm
Front Side Coating:	Diamond-Like Carbon
Back Side Coating:	Reflective Aluminum

For more information email:
afmprobeorders@bruker.com or visit:

ValueAFMProbes.com